

HEATED HOLDING CUBBIES

NEW MODEL:

PERFORMANCE FEATURE SHEET

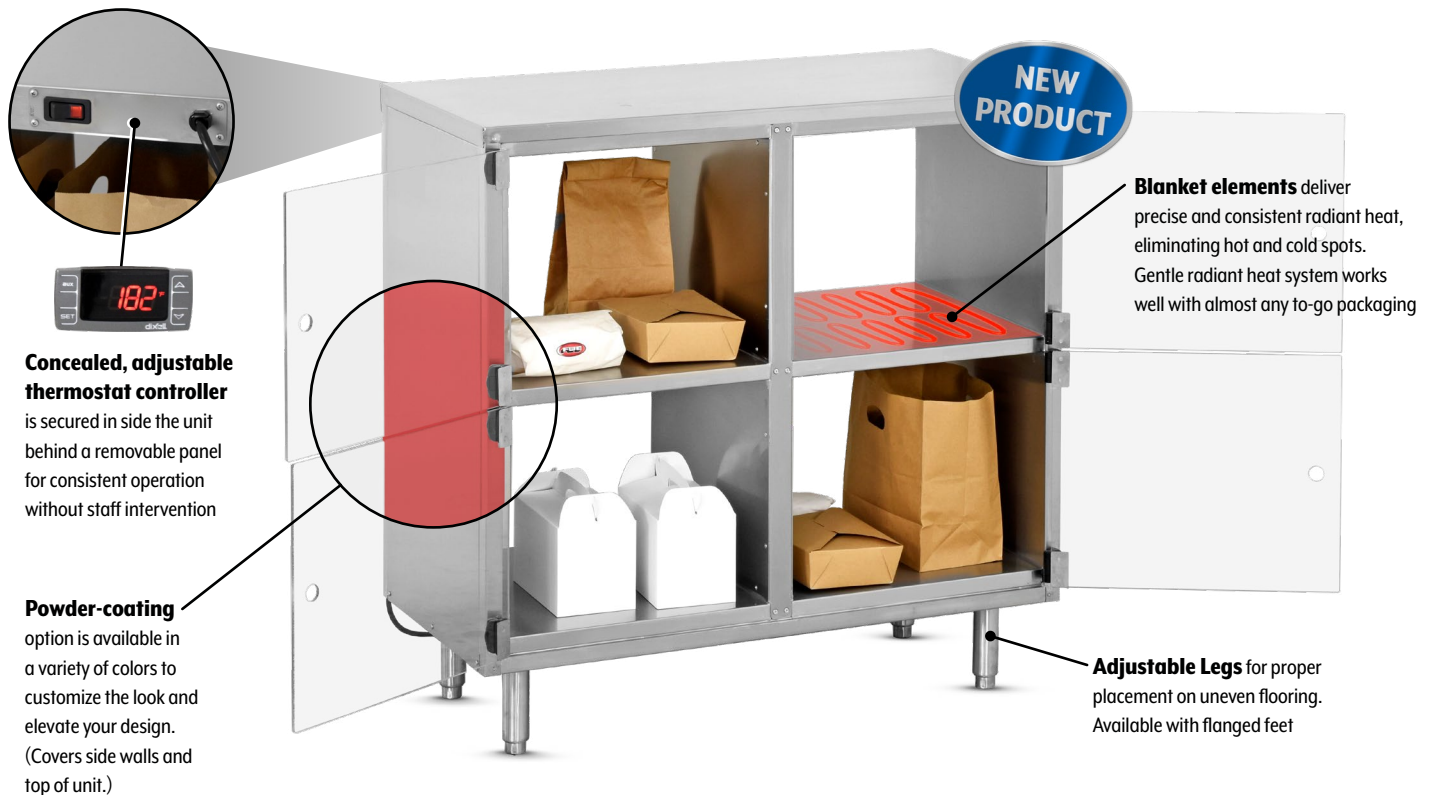
Individual cubbies separate orders for easy identification. Optional see-thru Lexan doors available for simplified cubby labeling

Pass-thru operation for easy loading and unloading of orders from either the food production or customer facing side

Clear pick-up location eases in-store customer traffic and prevents bottlenecks

No costly software or contracts. Simple, streamlined design means you never get "locked out" of your orders, and no smartphones required!

Flexible design allows for custom sizing to suit your operation's available space, packaging, and numbering system. Freestanding, countertop, and wall-mount options are also available to make the best use of your space

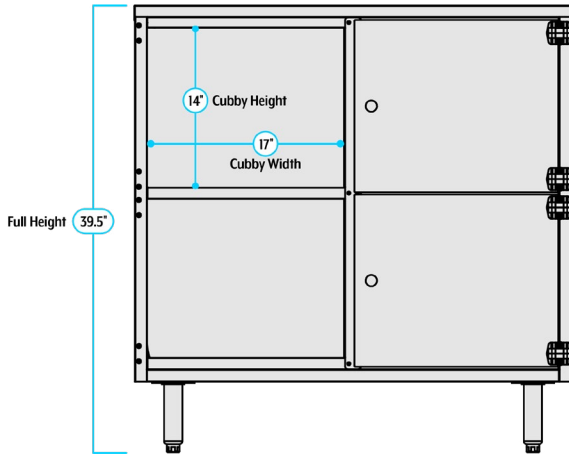


(Shown with Optional Accessory Lexan Doors (Add DR))

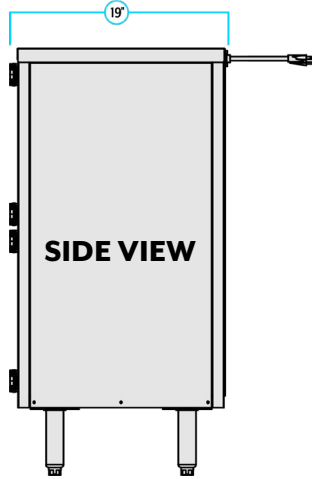


Performance Feature Sheet | Heated Holding Cubbies

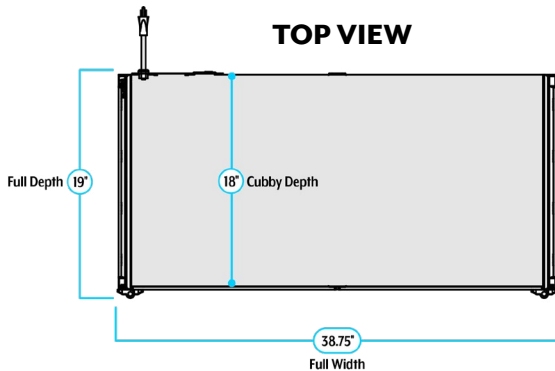
FRONT VIEW



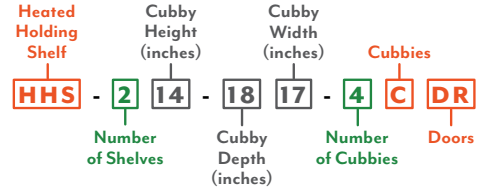
SIDE VIEW



TOP VIEW



MODEL NOMENCLATURE



ELECTRICAL DATA:

Volts: 120
Watts: 694
Amps: 5.8
Hertz: 50/60
Phase: Single



US: 5-15P



CAN: 5-15P

CUBBIES:

4 18" Deep, 17" Wide, 14" High
(457mm D, 431mm W, 355mm H)

DIMENSIONS:

Height: 39.5" (1003mm)
Depth: 19" (482mm)
Width: 38.75" (984mm)

CRATED WEIGHT:

215lbs (98kg)

OPTIONAL ACCESSORIES:

- Lexan Doors (Add DR)
- Individual Power Switches Per Shelf (Add IS)
- Custom Sizing (Consult Factory)
- Powder Coating
- Graphic Wrap (Top, Sides, and Lexan)
- Custom Door Labeling