



ATLAS METAL
making metal personal



**MEET OUR
FULL LINE.**

HI, WE'RE ATLAS.

All manufacturers claim their equipment is durable and reliable. We could say the same things too, but we've found that a hands-on approach is what makes us different.

The Atlas difference:

- **We're committed to hands-on manufacturing,**
so our products will always live up to the name that operators have relied on for 50+ years
- **We never compromise on the details—**
you get what you pay for, so our premium products perform perfectly
- **We provide genuine customer service** by helping you make the best equipment choice and always standing behind our products

ATLAS PROVIDES THE MOST VERSATILITY.

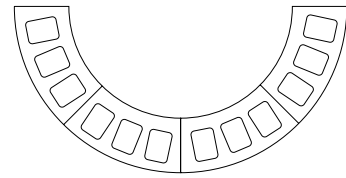
We're here to help you find serving equipment that meets your needs, whether you're remodeling or starting fresh. Along with offering a large inventory and quick delivery, our staff and field representatives will be happy to provide you with technical support and information every step of the way. It's all part of our hands-on approach. And it's all part of how we're making metal personal.



INFINITI SERVING SYSTEM

INFINITI UNITS.

Atlas INFINITI is the counter concept that provides an unprecedented level of simplicity, elegance and flexibility to servery design. From front panel configurations, to exterior finishes and state-of-the-art food guard options designed and manufactured for Atlas, the Atlas INFINITI concept is limited only by your imagination.



Flexible designs increase traffic flow and functionality

FLEXIBILITY MEETS FUNCTIONALITY.

The clean lines and attention to detail INFINITI offers allow you the freedom to focus on developing the project specifications while providing great flexibility and functionality for your clients.

If you're looking for long-term flexibility and a new way to increase traffic flow and reduce customer congestion, look to INFINITI.



INFINITI
CUSTOM SERVING COUNTERS

INFINITI SERVING SYSTEM

QUALITY THROUGHOUT.

The Atlas philosophy is to build quality into both the engineering and the manufacturing process in order to provide you with a truly superior finished product. Creative design and attention to detail finish are the Atlas trademark. We manufacture our products in-house and partner with selected vendors that meet the Atlas criteria to avoid any coordination difficulties and maximize quality.

DISTINCTIVE SOLUTIONS.

As a manufacturer of food serving equipment for over 50 years, Atlas is known for superior craftsmanship, workmanship and innovation in developing front-of-the-house serving solutions. Atlas offers you infinitely more choices and experience, and has a history of providing servery solutions that surpass our clients' expectations.



INFINITI
CUSTOM SERVING COUNTERS

INFINITI SERVING SYSTEM

COMBINE TO MAKE UNIQUE CREATIONS.

The INFINITI counter concept combined with the many Atlas accessories provides you with the flexibility and versatility to help you design a unique serving counter system from the ground up.



INFINITI
CUSTOM SERVING COUNTER



ATLAS METAL FEATURED IN FOOD SERVICE CONSULTANT MAGAZINE.

"Catering for the armed forces has its own unique challenges. Howard Riell spoke to consultants who have learned how to surmount them successfully."

Catering for the U.S. Military is an involved process that requires strict standards, optimal designs and unique specifications. Atlas has been reaching and setting these standards for over 50 years by making quality products that last.

MODULAR SERVING SYSTEMS

INFINITI FIT



INFRM-4 (LEFT) INFIH-4 (RIGHT)
INFINITI FIT 2-CART COMBO

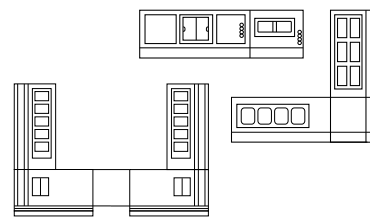
FOOD SERVICE YOU CAN COUNT ON.

Atlas modular units are the most flexible and versatile in the industry. No one offers you a wider range of attractive styles, colors, graphics, food guard designs and finishes. All modular units come standard on casters and are designed to roll in and out of different locations with ease. In a matter of minutes you can change your straight serving line to a scattered system or a food court.

Our quality construction ensures years of reliable service. Combined with our built-in pans and accessories, these units provide an efficient, practical and attractive food service system you can count on.

Mix and match modular unit sizes and plastic laminate colors to create a unique serving system that conforms to your exact size and design requirements. There are virtually no limitations.

The end result is a cost-effective, easily modified system that gets the job done.



A versatile system that offers a variety of configurations

A MODULAR LINE MADE TO AMAZE.

Our most premium modular line is built to evolve with you and your operation. Its wide range of stainless steel units lets you choose and customize what you need now, and then easily add to it later. Be bold with your vision and watch as this beautifully functional line fits right in.



INFINITI FIT
4-CART COMBINATION

TOP-OF-THE-LINE, ACROSS THE WHOLE LINE.

Clean lines, hidden-frame construction and our proprietary spring-activated "locking horns" technology deliver visual appeal and a tight, solid feel. 16-gauge stainless steel tops and stainless steel frames ensure long-lasting performance. Finished, welded edges won't rip clothing or collect food. A standard undershelf on all units offers added built-in convenience.*

*undershelf not included on #2 and #3 carts with condensing units



BL-SERIES

UNIQUE SERVING UNITS THAT BLEND IN.

These unique serving units feature: Euro-design 3/4" rounded aluminum cart uprights, recessed casters with skirting, attractive plastic laminate or urethane painted panels to blend with any decor and exclusive "Cam-lock" system. *All units shown with accessories.*



BLH-4
HOT SERVING UNIT



BLM
DUAL CASHIER UNIT



BLC-4 RM
REFRIGERATED COLD PAN
WITH 3" RECESSED TOP,
40" WIDE S/S TOP



BLH-4
SELF SERVICE
HOT UNIT

CA-SERIES

THE BEST MODULAR UNITS FOR YOUR SERVING LINE NEEDS.

Our CW and CA Modular Serving Systems are available in stainless steel or aluminum frame construction. All units include a self-locking device. Simply push the units together, and they will automatically lock. It's the perfect modular unit for your next installation.



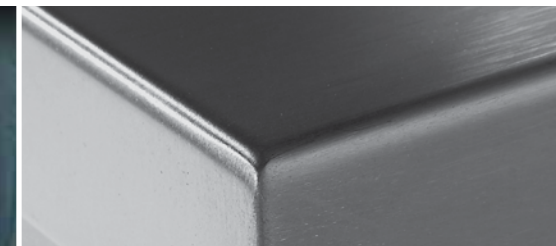
CAIH-4
MOBILE HOT SERVING CART

DISPLAY CASES THAT SHOW YOU REAL VALUE.

Atlas saves you a fortune on remodeling and installation costs with these easy to install drop-in refrigerated display cases. These efficient "pass-through" design units will not only keep your food cold and fresh, but will provide maximum visibility for an appealing presentation. They all feature stainless steel construction and self-closing doors.



CAPT-4
REFRIGERATED
PASS THROUGH DISPLAY CASE



DROP-INS

DROP-INS THAT LOWER COSTS.

Atlas Metal Industries, Inc. is recognized as the market leader and provides the food service industry with the most complete line and sizes of drop-in units. All units include an 18-gauge stainless steel fabricated liner, top frame and vinyl gasket for easy installation. These pans are the strongest, most efficient units on the market. Built to last, they provide many years of trouble-free service.



Atlas Quality means continuing to use 18-gauge stainless steel fabricated liners



WH-3
HOT PAN

DROP-INS



RMPHP-2
HOT/COLD PAN



RM-4
REFRIGERATED
COLD PAN WITH 3"
RECESSED TOP



WCMD-3
REFRIGERATED
COLD PAN



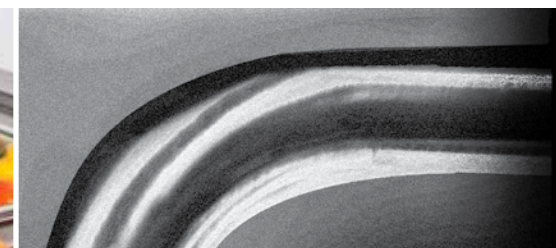
WIH-3
HOT PAN



WDFL
ICE CREAM FREEZER



WF-3
FROST TOP



SELF-LEVELING DISPENSERS

MORE EFFICIENCY FROM DAY ONE.

With Atlas Metal's exclusive self-leveling technology and our low maintenance stainless steel construction, you can begin to maximize your food service productivity and convenience, now!

PD SERIES DROP-IN DISH DISPENSERS THAT STAND OUT.

These units are self-leveling for high volume dish dispensing for cafeteria and tray make-up areas. And they are available for most standard sized plates, bowls and platters.



PDH-12
HEATED SHIELDED
DISH DISPENSER



PDS-5
UNHEATED SHIELDED
DISH DISPENSER



PD-5
OPEN DISH
DISPENSER

MOBILE DISPENSERS.

With Atlas mobile dispensers, you can easily transport your plates from the back of the house to your serving line. Featuring the long-lasting durability of stainless steel, these units provide the finishing touch to any cafeteria salad bar or food service installation.



MEPD-2
6 1/2" MOBILE ENCLOSED
PLATE DISPENSER



MOPD-2H
10 1/8" MOBILE OPEN
HEATED PLATE DISPENSER

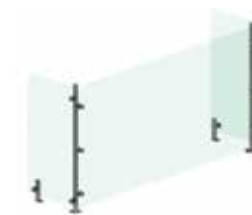
FOOD GUARDS

FOOD SAFETY AT ITS BEST.

Make food safety your priority with food guards from Atlas Metal. Featuring exceptional construction and a variety of configurations, they're built to complement any style for the long haul.

CONSTRUCTION THAT PERFORMS.

All components are CNC machined in the USA. The stainless steel tubing is all welded, ground and polished to a uniform finish, with stainless steel clamps welded to the frame. No detail is overlooked, which means you get years of service for your investment.



PRVC
PROTECTOR CASE



PRC-002
PROTECTOR CASE



BCDFT
BUFFET CANOPY



CSG-3M
CUSTOM BUFFET CANOPY



CSG-3A
CUSTOM PROTECTOR CASE



CSG-3K
PROTECTOR CASE

CUSTOMIZATION THAT DELIVERS.

Atlas panel choices include clear tempered glass, safety glass and plexiglass, all of which meet or exceed ANSI Z97.1 standards. A range of finish options completes the look and feel, matching your new or existing aesthetic. *Panels from Versa-Gard® are also available.*



CUSTOM GRAPHICS

TOTAL COLOR & GRAPHICS CUSTOMIZATION.

Atlas helps you make the right choice every time for every budget, every meal, hot or cold, stationary or mobile. We offer something for everyone. And we can match your institutional colors, or help with custom graphic packages.

PARTNERSHIPS.

We partner with many of the leading manufacturers of food guards, ceramic cook tops, solid surface suppliers and display canopies, in order to provide you with maximum design flexibility for your next project or installations.

BRILLIANT CHOICE OF COLORS.

Atlas gives you a wide range of attractive standard plastic laminate colors to choose from as well as urethane painted panels, which blend with any decor. You can also add your school logo or mascot on the counter fronts and promote your school spirit! Custom colors are available upon request.



Base Mounted Refrigeration
With Vented Air Flow



BLM-1
CASHIER

BLC-3-RM
COLD SERVING

BLH-3
HOT SERVING

BLU-3
UTILITY

Call an Atlas representative for a complete color chart. All units with optional accessories. For additional information on sizes, specifications and options, contact the factory or your local representative.



ATLAS METAL

Atlas Metal Industries, Inc.
Subsidiary of Mercury Corporation
1135 N.W. 159th Drive
Miami, Florida 33169
Tel 305.625.2451
Toll Free 800.762.7565
Fax 305.623.0475
www.atlasfoodserv.com